

Cutting CO₂ emissions

NeoCem calcined flash solution

Choosing a non-CO₂ emitting raw material

Choosing a very low energy intensive process



100% Clays:
Releases water during calcination



Preparation process:
Short combustion time at lower temperature

822 kg CO₂e / t



-548



-179



95 kg CO₂e / t



Source: Riverse study "NeoCem: Alternative to traditional cement CEM I"

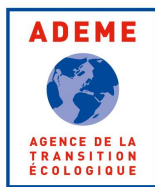


7 years
Of R&D, a patent
filed in France

**Plant ramp-
up**
from Q2 2025,
30km North from
Paris

9x times
Less emissive than
Portland, at
95kgCO₂/t

Noted Q
Calcined natural
pozzolans fit for
LC3 formulations



200kt/year
Plant production
capacity

**150kt
CO₂/year**
CHG emissions
avoided



NeoCem flash calcined clay

1

Calcined natural pozzolan

NeoCem is a flash-calcined clay that can be used as a main cement constituent (calcined natural pozzolan "Q") according to the European standard NF EN 197-1

2

Fabrication

The raw material comes from the recovery of co-product clays. The clay is selected, homogenized, dried, ground, and then calcined through flash calcination

3

Reactivity

NeoCem has an activity index (AI) at 28 days equal to 100% according to the NF standard



Global commercial traction valued at €xm

Offtake metrics



350,500
Ktpa In pipeline

€45.5m
Revenue In pipeline

128,500
Ktpa in pre-offtake

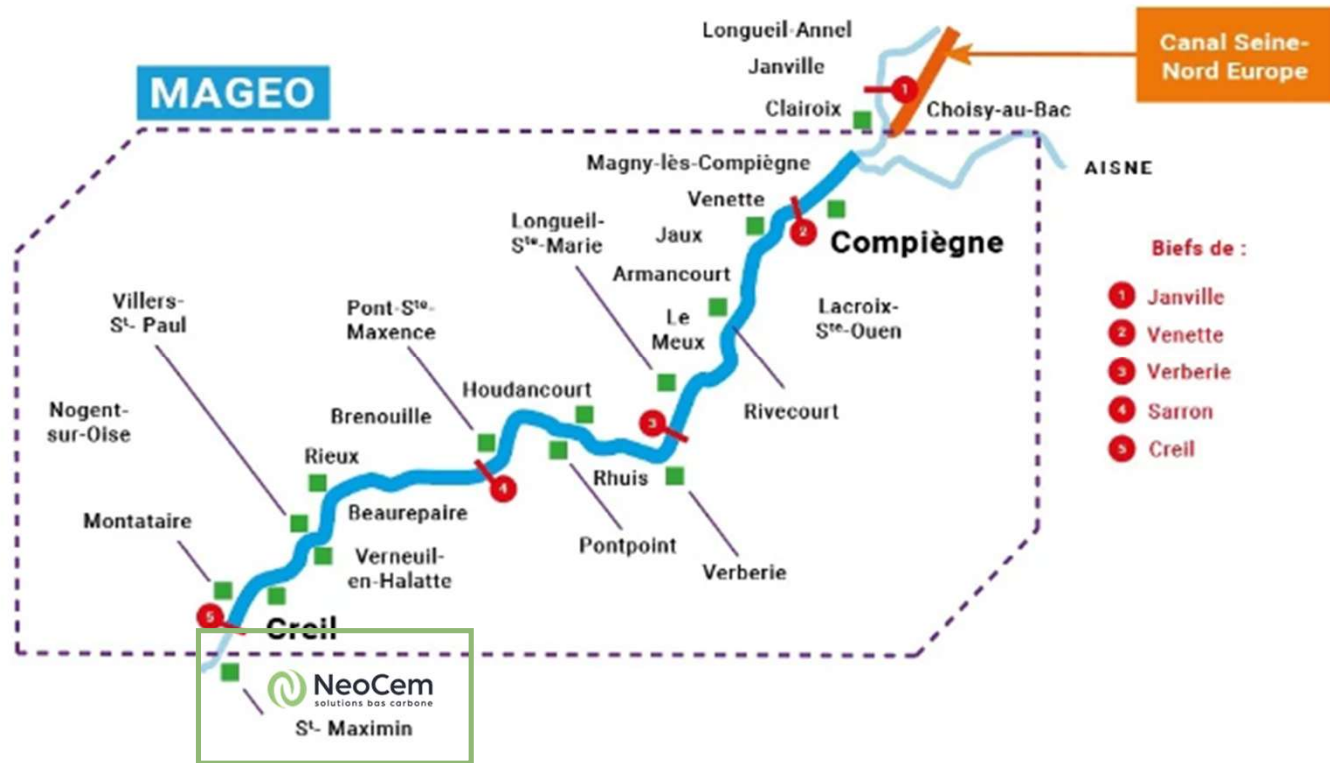
3x
Total Pipeline
on First line Capacity



Note: 1 – Pre-reservation contract

Site location

A strategic location – 30km North from Paris



Saint-Maximin first production unit

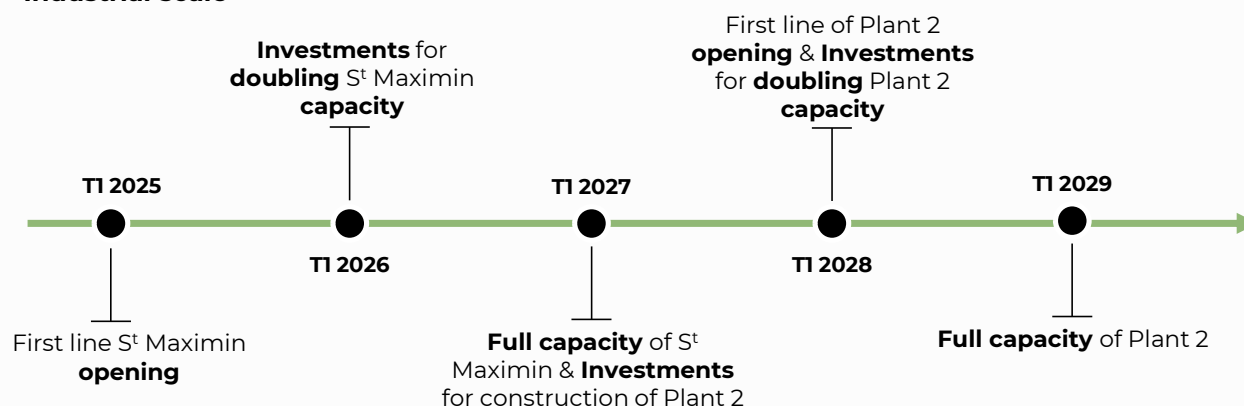
Ready to scale



Efficient industrial scale backed by proven market fit

Industrial scale driven by saturation of production capacity

Industrial scale



Volume capacity of each industrial line (t/year)

Plants	Lines	T1 2025	T1 2027	T1 2028	T1 2029
St Maximin (Plant 1)	Line 1	100k	100k	100k	100k
	Line 2	-	100k	100k	100k
Plant 2 (Joint Venture)	Line 1	-	-	100k	100k
	Line 2	-	-	-	100k
Total		100k	200k	300k	400k

Bringing proven NeoCem platform to industrial scale...

400kt

Production capacity in 2029

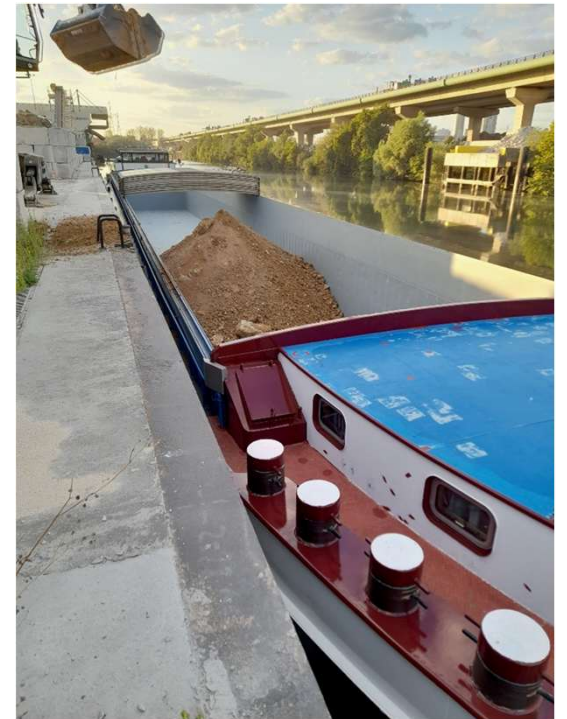
2

Production plants located in ..



Dock

Low carbon river logistics – 300 KTPA



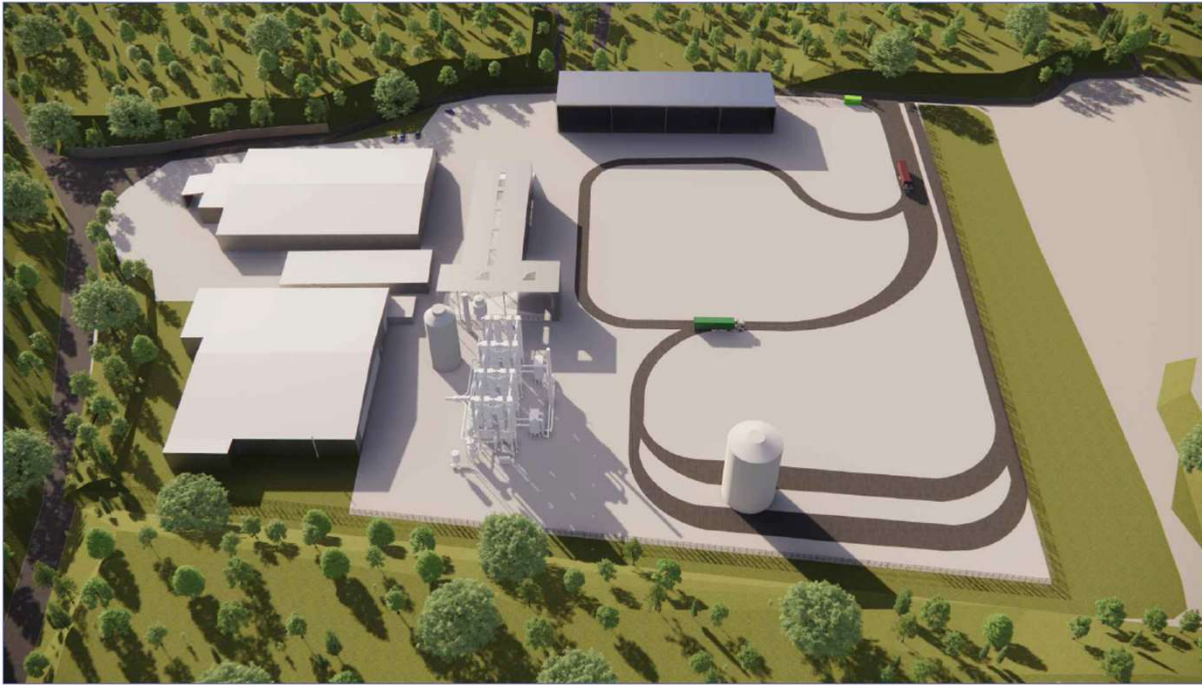
 Note: 1 – Upcycled SGP clays shipped by barge 20 kt – Q4 2023

Saint Maximin

Quarry Brownfield reconversion – 10 HA



Saint Maximin Building Permit – Delivered Q1 2024



September Update

Clay Grinding & Drying infra in progress

